

Mount Ousley interchange

Project update

May 2024



Australian Government

BUILDING AUSTRALIA



NSW
GOVERNMENT



Indicative artist impression of Mount Ousley interchange looking north (landscaping shown at full maturity)

We are building a \$390 million interchange on the M1 Princes Motorway at the base of Mount Ousley that will improve connectivity, safety and efficiency for those travelling through the gateway to Wollongong.

Our vision is to build an interchange that is integrated within its surroundings, while establishing a strong identity as the northern gateway to Wollongong and the South Coast. As part of the detailed design process, the project's Urban Design and Landscape Strategy Report is now on display and you are invited to provide your feedback by Sunday 9 June 2024.

What is the Urban Design and Landscape Strategy Report?

The Urban Design and Landscape Strategy Report (UDLSR) outlines the design and landscape vision and objectives for the project, and guides its physical design in a way that is consistent with the overall project objectives.

The report aims to balance transport infrastructure design with the natural landscape, informed by local Aboriginal and non-Aboriginal heritage.

Key urban design and landscaping features of the project include:

- Landscaping approach and species selection
- Built elements including bridges, safety screens, noise walls and retaining walls
- Pedestrian and cyclist connectivity
- Relocating the existing sculpture
- Interpretive signage, wayfinding and gateways
- Exploring connection to Country.



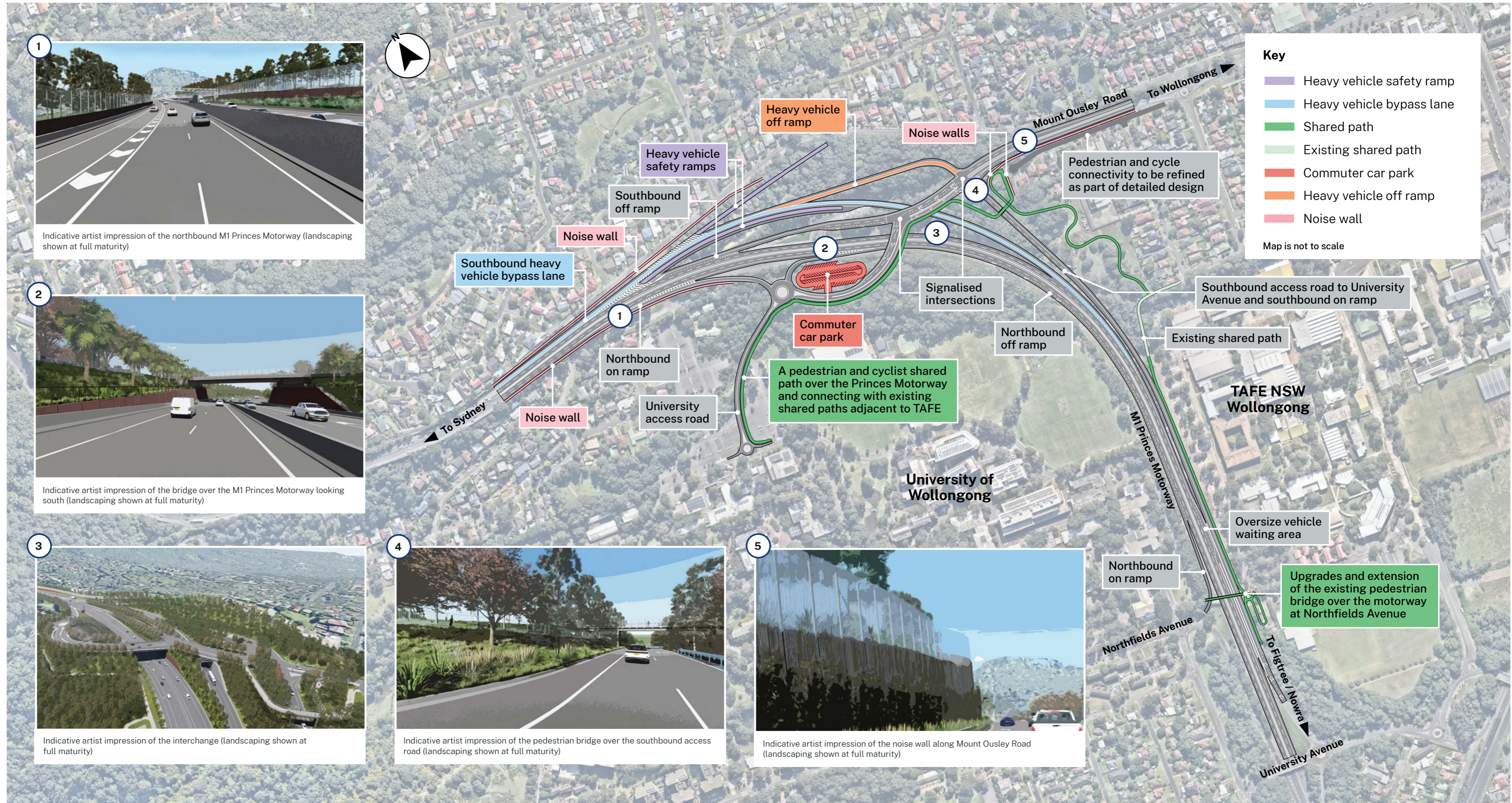
We'd like your feedback

The report is now on display and you are invited to provide your feedback by Sunday 9 June 2024.

We welcome your feedback on the following aspects of the UDLSR:

- Landscaping and species selection
- Artwork and finishes on retaining walls and bridge safety screens
- Interpretive signage
- Relocation of the existing sculpture.

Aspects of the project that we are unable to change include the overall project scope, the location and number of lanes, intersection types, bridge locations and lengths, and other structural elements such as retaining walls and noise wall heights.




Connection to Country

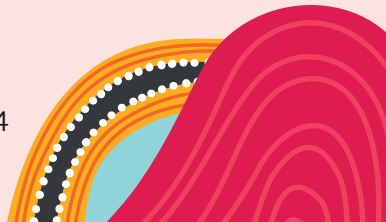
The area surrounding the Mount Ousley interchange project was originally inhabited by the Wodi Wodi people of the Dharawal Nation and language group. Infrastructure projects like this one offer an opportunity to celebrate and acknowledge the Aboriginal Country, culture and people of the land on which the project is delivered.

In our project design, we can acknowledge Country and Aboriginal history through landscape design, signage, artwork, language and storytelling. The project will improve the appearance and function of a key link between Wollongong and the Illawarra, and will implement elements to better express the unique character of the coast and escarpment in a gateway experience.

Establishing a connection to Country through pattern, colour, and pictorial elements, integrated thoughtfully into the built environment will enrich the road user's experience and contribute to a better understanding of place and culture. This will also be reflected in the project's landscape design which will create and enhance a feeling of connection with the surrounding environment.

We will engage with local Aboriginal knowledge holders and stakeholder groups as part of the detailed design process.

 For more information, view chapter 4 of the report.




Built elements

Built elements including bridges, safety screens, retaining walls, noise walls and road furniture form part of the urban design features of the project.

The bridges have been designed to eliminate safety risks during construction and provide an improved visual outcome. Pattern, colour, and pictorial elements will be used on feature safety screens and retaining walls, supported by landscaping around prominent bridges.


Noise walls will incorporate transparent tinted panels and landscaping to reduce the visual impact of the walls for residents and road users.

 For more information, view chapters 5–7 of the report.

Pedestrian and cycle connectivity


The active transport network includes new shared paths and upgrades to existing paths which will connect the education precincts and residential areas either side of the M1 Princes Motorway. The network will include two new shared paths over the M1 and the new southbound on-ramp and University Avenue access road, and upgrades to the existing pedestrian bridge at Northfields Avenue. The new shared paths will be a minimum of three metres wide.

At grade cycle and pedestrian connections along and across Mount Ousley Road are being developed as part of detailed design.

 For more information, view chapters 5–7 of the report.


Landscaping

The landscape design is responsive to the local environment and seeks to minimise the impacts of the interchange by planting areas with native species which connect to the existing vegetation corridors. This includes the Blackbutt Forest to the north and Moist Blue Gum Forest to the south.

 For more information, view chapters 5–7 of the report.

Gateway, interpretive art and wayfinding signage

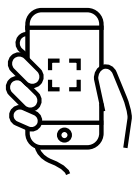
The design seeks to integrate the project within its surroundings, while establishing a strong identity as the northern gateway to Wollongong and the South Coast. The gateway may include feature landscaping, interpretive art, relocation of the existing sculpture and wayfinding signage.

 For more information, view chapters 5–7 of the report.



Indicative artist impression of the Wollongong gateway sculpture (landscaping shown at full maturity)

Where to view the report



You can view the UDLSR on the project website and portal

Meet the project team

The team will be out and about in the community to discuss the project and answer your questions during the display period. You can join us at:

Friday 31 May 2024

8am until 3pm at Wollongong Markets
Crown Street Mall, Wollongong

Monday 3 June 2024

3pm until 7pm at TAFE Wollongong Library
TAFE Wollongong Campus, Block A
Foleys Lane, North Wollongong

Friday 7 June 2024

8am until 3pm at Wollongong Markets
Crown Street Mall, Wollongong

How to provide feedback

During this display period, you can provide your feedback by visiting:

- the project website and portal
- us at a drop-in session or pop-up stall.

Next steps

The feedback received during the UDLSR display period will be considered in finalising the project's detailed design along with the information obtained from early work activities. Work on the project's detailed design will continue during 2024.

Major work is planned to start in late 2024, with the project expected to take about four years to complete, weather permitting.

Contact us



1800 792 918



MountOusleyInterchange@
fultonhogan.com.au



transport.nsw.gov.au/mountousley



Mount Ousley interchange,
PO Box 477 Wollongong NSW 2520

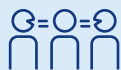


You can also scan the QR code to visit the project website and subscribe for email and SMS



For the latest traffic updates:

Call 132 701, visit [livetraffic.com](https://www.livetraffic.com) or download the app Live Traffic NSW



Interpreter service

For languages other than English call 131 450
Arabic • Greek • Hindi • Mandarin • Vietnamese

لطلب خدمة الترجمة الشفهية للغات غير الإنجليزية اتصل
بالرقم 131 450

Για υπηρεσίες διερμηνείας σε άλλες γλώσσες εκτός από
τα Αγγλικά καλέστε το 131 450

अंग्रेज़ी के अतिरिक्त अन्य भाषाओं के लिए दुभाषिया सेवा
131 450 पर कॉल करें

获取英语以外的其他语言口译协助服务可以致电131 450

Để có dịch vụ thông ngôn cho các ngôn ngữ khác tiếng
Anh, gọi số 131 450

www.transport.nsw.gov.au/privacy-statement#Your_Privacy